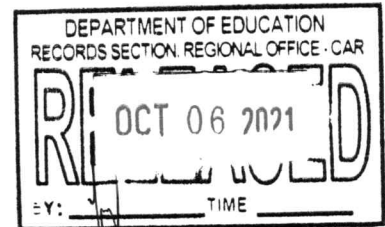




Republic of the Philippines
Department of Education
CORDILLERA ADMINISTRATIVE REGION
Wangal, La Trinidad, La Trinidad, Benguet



October 5, 2021

REGIONAL MEMORANDUM

No. 461-2021

**ADOPTION OF PROJECT HYBRID LEARNING USING TECHNOLOGY
WITH EQUITY AND QUALITY (HyTEQ)**

TO: OIC-Assistant Regional Director
Schools Division Superintendents
SDOs Baguio City and Benguet
All Others Concerned

1. The Department of Education-Cordillera Administrative Region is implementing the Basic Education-Learning Continuity Plan to ensure that learning opportunities are provided to our learners in a safe manner through different learning modalities.
2. Relative to this, the Project HyTEQ (Hybrid Learning Using Technology with Equity and Quality) was conceptualized to utilize online and/or in-person learning experiences through hybrid teaching-learning delivery that combines traditional classroom experiences, experiential learning and digital course delivery. It aims to improve the learning resources efficiency/cost, access and the teaching-learning process.
3. The Project HyTEQ will be utilizing the Learning Management System (LMS) setup by the Department of Education that can be used by teachers and learners who would like to adopt online classes as the modality by which learning would be delivered. It recommends a standard dashboard format to be used by all users in CAR.
4. Self-Learning Modules (SLMs) to be packaged in the LMS shall be taken from the Text-Based Shield that were evaluated by the Regional Quality Assurance Team. SDOs that started packaging quarter 1 modules in the LMS are advised to submit their outputs to the Regional Office for quality assurance.
5. This project will be utilized by the school-recipients and other schools that are implementing online/offline learning delivery.

CLMD/RCA/gcd



Address: Wangal, La Trinidad, Benguet, 2601
Telephone No.: (074) 422-1318 | Fax: (074) 422-4074
Website: www.depedcar.ph | Email: car@deped.gov.ph



ISO 9001:2015 Certified
Quality Management System
DE-50500784 QM15



Republic of the Philippines
Department of Education
CORDILLERA ADMINISTRATIVE REGION
Wangal, La Trinidad, La Trinidad, Benguet

6. Attached are the following documents for your reference and guidance:

- Enclosure 1. Operational definitions of terms
- Enclosure 2. Options for Implementation
- Enclosure 3. Process flow of LMS Packaging and quality assurance
- Enclosure 4. List of Project HyTEQ Recipients

7. For other queries, please feel free to contact 422-7096 or CLMD OIC Rosita Agnasi at rosita.agnasi@deped.gov.ph, Information Technology Officer Jumar Yagoan at jumar.yagoan@deped.gov.ph or Georgina Ducayso at georgina.ducayso@deped.gov.ph

8. Immediate and widest dissemination of and compliance with this Memorandum is directed.


ESTELA LEON-CARIÑO EdD, CESO III
Director IV/Regional Director



Republic of the Philippines
Department of Education
CORDILLERA ADMINISTRATIVE REGION
Wangal, La Trinidad, La Trinidad, Benguet

Enclosure 1. Operational Definition of Terms

Learning Management System (LMS) is a software application or web-based technology administration, documentation, tracking, reporting, automation and delivery of educational courses, training and development programs.

MOODLE stands for Modular Object-Oriented Dynamic Learning Environment. It is an open source learning management system providing a platform for e-learning and it helps the various educators courses, course structures and curriculum thus facilitating interaction with online students.

DepEd LMS is a MOODLE based learning management system setup by the Department of Education.

On-premise LMS is a learning management system hosted locally in the school/office. MOODLE is the platform to be installed on-premise of the school recipients of the Project HyTEQ.

LMS Course Package is a collection of digitized learning resources packaged and quality assured by the DepEd CAR for use by all MOODLE LMS users in the Cordillera Administrative Region. The contents usually are from the SLMs redeveloped, enhance and packaged following the standards set by DepEd CAR to fit in the said LMSs.

Digitization is the process of transforming information from a physical format like the printed SLMs, books, and other learning resources to an electronic gadget.

Digitized Learning Resources or e-learning materials are study materials published in digital format. These include e-textbooks, e-workbooks, educational videos, e-tests and others.

Digitalization is the practice of utilizing technology to enhance processes. It is the process of moving to a digital learning to improve learning delivery and provide opportunities for learners to have more learning experiences in a collaborative learning environment.

Blended distance learning or hybrid learning is a combination of any of the sub-categories of distance learning. The combination maybe, but not limited to, Online Distance Learning (ODL) and Printed Modular Distance Learning (PMDL) , Online Distance Learning and TV-Video/Radio-Based Instruction, and others.

Synchronous distance learning involves live communication either through sitting in a classroom, chatting on line or teleconferencing. The learning group interacts at the same time from different physical locations.

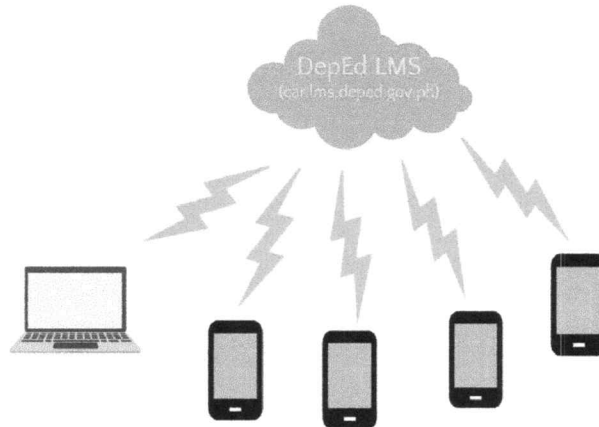
Asynchronous Distance Learning occurs virtually online and through prepared resources, without real-time teacher-led interaction. It usually has a set of weekly deadlines, but otherwise allows students to work at their own pace.



Republic of the Philippines
Department of Education
CORDILLERA ADMINISTRATIVE REGION
Wangal, La Trinidad, La Trinidad, Benguet

Enclosure 2. Options of Implementation

Option 1 - Purely DepEd LMS

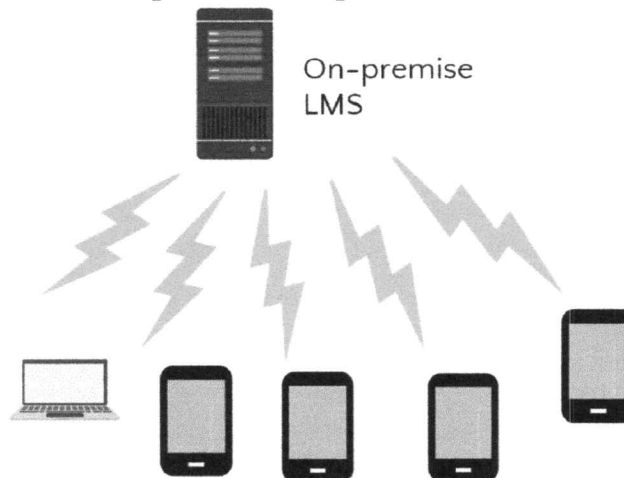


This option is recommended for schools with almost all or all learners and teachers having access to good internet.

The following support shall be provided to learners:

- load/mobile data for synchronous activities
- android tablets
- training on the use of DepEd LMS, training on DepEd LMS

Option 2 - On-premise LMS



This option is recommended for schools having all or almost all learners and teachers have no access to the internet. Additionally, this is recommended if the school has a bad geographical terrain and is not suitable for an extended local area network.

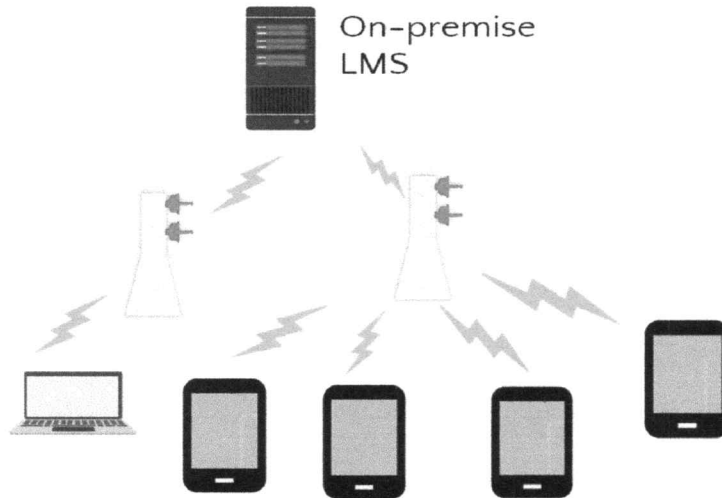
The following support shall be provided to learners:

- android tablets
- training on the use and maintenance of on-premise LMS
- funds for procurement of network equipment and system unit upgrades



Republic of the Philippines
Department of Education
CORDILLERA ADMINISTRATIVE REGION
Wangal, La Trinidad, La Trinidad, Benguet

Option 3 - On-premise LMS with extended Local Area Network

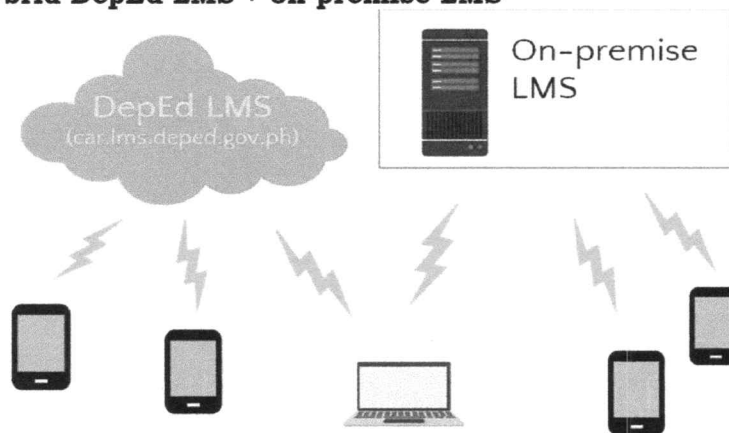


This option is recommended for schools with learners and teachers having no or limited access to the internet but the geographical terrain is suitable for an extended local area network (LAN).

The following support shall be provided to learners:

- android tablets
- training on the use and maintenance of on-premise LMS
- funds for procurement of network equipment and system unit upgrades

Option 4 - Hybrid DepEd LMS + on-premise LMS



This option is recommended to schools with a large percentage of learners having good internet connection and also a large percentage having no or limited access to the internet.

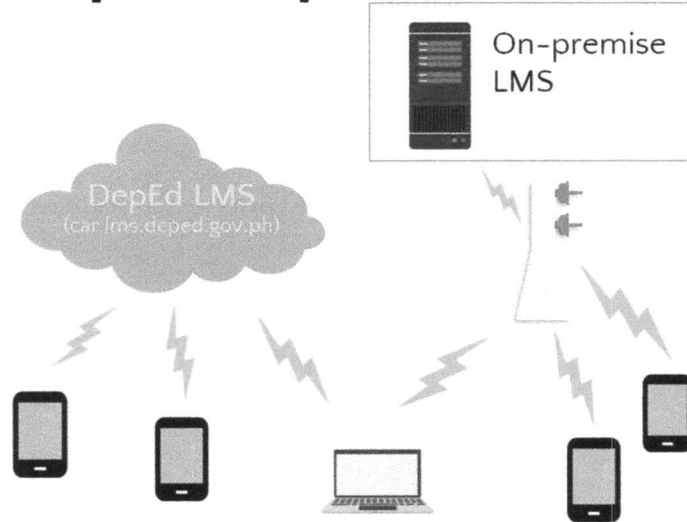
The following support shall be provided to learners:

- android tablets
- training on the use and maintenance of on-premise LMS
- training on the use of DepEd LMS
- funds for procurement of network equipment and system unit upgrades



Republic of the Philippines
Department of Education
CORDILLERA ADMINISTRATIVE REGION
Wangal, La Trinidad, La Trinidad, Benguet

Option 5 - Hybrid DepEd LMS + on-premise LMS with extended LAN



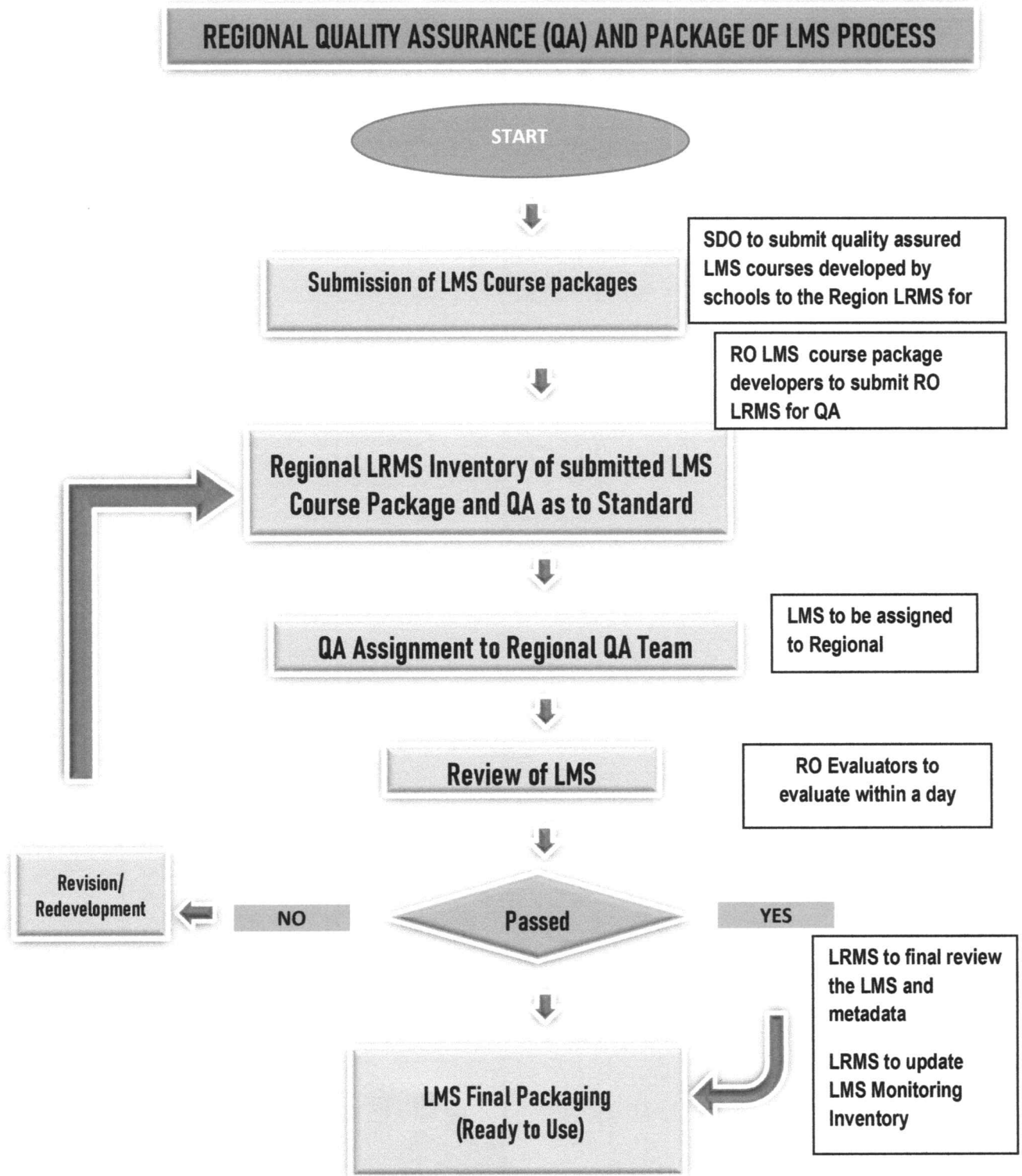
This option is recommended to schools with a large percentage of learners having good internet connection and also a large percentage having no or limited access to the internet. Furthermore, the terrain is suitable for establishing an extended LAN.



Republic of the Philippines
Department of Education
CORDILLERA ADMINISTRATIVE REGION
Wangal, La Trinidad, La Trinidad, Benguet

Enclosure 3. Process Flow of Quality Assurance

Quality Assurance (QA) and LMS Course Package Process





Republic of the Philippines
Department of Education
CORDILLERA ADMINISTRATIVE REGION
Wangal, La Trinidad, La Trinidad, Benguet

Enclosure to RM 461.2021,

List of Recipient Schools for the Project HyTEQ

Division	School	Grade Level	No. of Learners
Abra	Bucay North ES	5	27
	Malapao ES	5	14
	Agtangao ES	6	30
	Sallapadan CS	6	19
	Western Abra National High School	7	35
	Abra High School -main Science High School	8	80
	Gaddani NHS	9	41
	Pilar Rural HS	10	49
Apayao	Apayao Science High School	10	60
	Tumog National Agricultural HS	12	38
	St. Marcela National High School	10	30
	Pudtol Vocational School	9	20
		12	20
Baguio City	Mabini Elementary School	6	
	Magsaysay Elementary School	6	
	Guisad Valley National High School	11	
	San Vicente National High School	10	
Benguet	Virac ES	3	50
	Tuba Central NHS	11	50
	Datakan Integrated School	4	18
		5	25
		6	19
		7	44
		8	33
	Cordillera Regional Science HS	8	71
Atok National HS	10	35	



Republic of the Philippines
Department of Education
CORDILLERA ADMINISTRATIVE REGION
Wangal, La Trinidad, La Trinidad, Benguet

	Tuba Central School		4	35
	GBDAIS Taba-ao		8	30
	Benguet NHS Bineng Annex		12	12
	Sagandoy Elementary School		6	8
			5	8
			4	15
	LMS SAGUBO ES		6	30
Ifugao	PIWONG ES	Kindergarten		20
			6	20
	MOMPOLIA ES		2	20
	POTIA ES	Kindergarten		20
			1	20
			2	20
			3	20
	TINOC Central School		4	20
	TINOC NHS		10	20
	LAGAWE NHS - Extension		9	20
	BURNAY ES		2	20
	BAGUINGE ES		6	32
Kalinga	Balbalan Agro IS		12	13
	Balbalan NHS		12	10
	Balbalan ES		4	10
	Sucbot NHS		12	10
	Magaogao ES		6	13
	Rizal School of Arts and Trade		12	8
	Sentor NHS		10	10
	Liwan West ES		5	10
	Lubuagan CS		6	10
	Pinukpuk Vocational School		9	10
	Pinukpuk CS		5	10
	Magtoma NHS		12	10
	Tanudan NHS		12	10
	Pasil CS		6	10
	Mt. Province	Cagubatan NHS		7
Dacudac National High School			11	30
			12	27
Dacudac ES			4	17
Tipunan NHS			8	65
Capinitan ES			4	16
			5	13
		6	13	



Republic of the Philippines
Department of Education
CORDILLERA ADMINISTRATIVE REGION
Wangal, La Trinidad, La Trinidad, Benguet

	Tadian CS	4	42
	Guinzadan ES	4	57
	Cagubatan NHS	7	45
	Dacudac National High School	11	30
Tabuk City	Toppan ES	8	17
	Pao ES	5	12
	Pantar ES	6	12
	Paligatto ES	4	10
	Laya West	6	18
	Nambucayan NHS	10	45
	Eastern Kalinga NHS	9	38
	Gradual Discoveyr	4	9