



Republic of the Philippines
DEPARTMENT OF EDUCATION
CORDILLERA ADMINISTRATIVE REGION

Wangal, La Trinidad, Benguet, 2601
Website: www.depedcar.ph | Email: car@deped.gov.ph



RELEASED
SEP 04 2018

September 4, 2018


REGIONAL MEMORANDUM
No. 292-2018

DEPED-CAR _____

DEPED-CAR RESEARCH FRAMEWORK

TO: Regional Office Chiefs/Officers-In-Charge
Schools Division Superintendents
All Others Concerned

1. This Office, through the Policy, Planning and Research Division (PPRD) furnishes your Office a copy of the Regional Research Framework as agreed during the Orientation-Workshop on Writing Final Reports and Research Journals at the RNEAP Hall on July 31 to August 3, 2018.
2. The framework identifies key concepts that interrelate with one another and embodies the themes of the DepED-CAR Research Agenda and the processes to be undertaken in all governance levels to provide access to an improved quality basic education through research.
3. Attached is Enclosure 1, "DepEd-CAR Research Framework" for your reference.
4. For information and guidance.


MAY B. ECLAR, Ph.D., CESO V
Regional Director

PPRD/PDE/rsg

Contact Numbers (Area Code: 074):

Office of the Regional Director 422-1318
Fax 422-4074
Office of the ARD 422-9590
ICT Unit 422-1318
Public Affairs Unit 422-1318
Legal Unit 423-2214

Administrative Division 422-1804
Cash Section 423-2215
Payroll Section 424-3993
Records Section 423-2213
Supply Section 422-2198
General Services Unit 422-1804

CLMD 422-7096
LRMDS 422-0615
ESSD 423-2218
Finance Division 422-5155
FTAD 424-5187

HRDD 422-9590
NEAP-R 422-5500
PPRD 422-9590
QuAD 422-5187
COA 422-7434

DEPED CAR RESEARCH FRAMEWORK

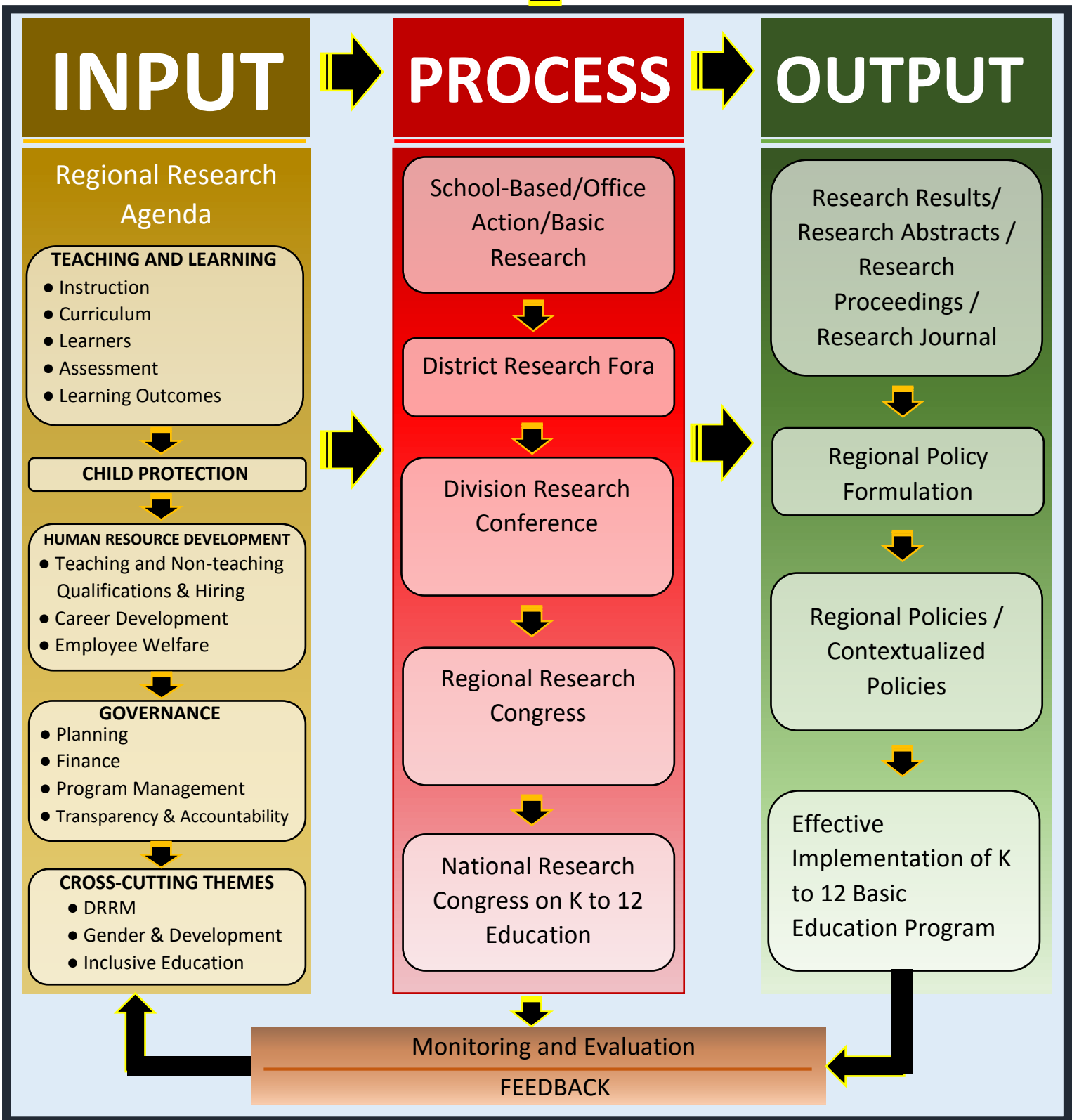
**TARGET
OUTCOME**

Every Cordillera learner has access to an improved quality basic education through research



**DEPED CAR
ACTIONS**

Evidence-based policies, programs, projects and activities



INPUT

PROCESS

OUTPUT

Regional Research Agenda

TEACHING AND LEARNING

- Instruction
- Curriculum
- Learners
- Assessment
- Learning Outcomes

CHILD PROTECTION

HUMAN RESOURCE DEVELOPMENT

- Teaching and Non-teaching Qualifications & Hiring
- Career Development
- Employee Welfare

GOVERNANCE

- Planning
- Finance
- Program Management
- Transparency & Accountability

CROSS-CUTTING THEMES

- DRRM
- Gender & Development
- Inclusive Education

School-Based/Office Action/Basic Research

District Research Fora

Division Research Conference

Regional Research Congress

National Research Congress on K to 12 Education

Research Results/ Research Abstracts / Research Proceedings / Research Journal

Regional Policy Formulation

Regional Policies / Contextualized Policies

Effective Implementation of K to 12 Basic Education Program

Monitoring and Evaluation
FEEDBACK

Description:

The target outcome for the research program of DepEd-CAR is every Cordillera learner has access to an improved quality basic education through research. DepEd-CAR has to develop evidenced-based policies and implement programs/projects/activities based from research which can be achieved through the input-process-output diagram shown in the framework. The input-process-output is cyclic as research is dynamic.

The inputs are the researches conducted from the different themes provided in the regional research agenda aligned with the Basic education research agenda as stipulated in DO No. 16, s. 2017 or the Research Management Guidelines. We have four (4) themes namely: Teaching and Learning, Child Protection, Human Resource Development, and Governance. Teaching and learning involves instruction, curriculum, learners, assessment, and learning outcomes. Child protection covers bullying, harassment and discrimination, teenage pregnancy, addiction and child abuse. Human resource development covers teaching and non-teaching qualifications and hiring, career development, and employee welfare. Governance includes planning, finance, program management and transparency and accountability. The cross-cutting themes include disaster risk reduction management, gender and development and inclusive education. Research topics conducted should be in the research agenda.

The Region/Division/District's areas of research would improve contextualization and implementation of policy in the region, division and district; program development and process and program evaluation while the schools are action research that would improve teaching and learning and school governance; matters arising from school improvement plan (SIP) analysis and Learning Action Cells (LAC) sessions that require further investigation.

The process may be thru conducting a school-based or Office/Unit action/basic research and dissemination of these research results thru a research forum/congress/conference across governance levels: school, district, division, region or national levels.

The outputs are the Research Results/ Research Abstracts / Research Proceedings or Research Journals as the case may be. The research findings may lead to a policy formulation that will support the effective implementation of the K to 12 Basic Education Program.

The role of the region in policy implementation is contextualization while division will handle implementation. The basic education research fund (BERF) will be used on research that will contextualize the policy process (for the region) and implementation of the policy (for the division).

Monitoring and evaluation may be conducted in the process or outputs emphasizing progress monitoring and periodic data collection or adjusting implementation strategies based on data collected and trends analyzed which in a form of feedback will improve the inputs or process and eventually the outputs. The outputs may be a source in determining inputs to the next cycle.