



Republic of the Philippines  
**Department of Education**  
Cordillera Administrative Region

**REQUEST FOR QUOTATION**  
**(RFQ No. 20-12- 122)**

**PROJECT: REPAIR/REHABILITATION OF MAIN BUILDING**

**INVITATION**

*Date: December 9, 2020*

*Request for Quotation No.: 20-12-122*

**To Eligible Suppliers:**

The DepED-CAR Regional Office through its Bids and Awards Committee (BAC), invites suppliers to quote for the **REPAIR/REHABILITATION OF MAIN BUILDING**.

Quotations should be **inclusive** of tax. The total approved Budget for the project is **Php 948,696.94**.

Quotations with supporting documents may be submitted in person, by letter, facsimile or thru email at [depedcar.bacsecretariat@gmail.com](mailto:depedcar.bacsecretariat@gmail.com) **not later than 3 pm of December 15, 2020**. For any inquiry, please refer to the members of the BAC Secretariat at DepED-CAR RO, Wangal, La Trinidad, Benguet with telefax numbers (074) 422-1804 / 422-5155. Upon receipt of quotation/s on the submission deadline, the BAC shall open the quotations.

Very truly yours,

  
**FLORANTE E. VERGARA**  
BAC Chairperson

Bacsec/cdad



Address: Wangal, La Trinidad, Benguet, 2601  
Telephone No: (074) 422 – 1318 | Fax No.: (074) 422-4074  
Website: [www.depedcar.ph](http://www.depedcar.ph) | Email Address: [car@deped.gov.ph](mailto:car@deped.gov.ph)



ISO 9001:2015 Certified  
Quality Management System  
DE-50500784 QM15

**I. QUOTATION FORM  
(RFQ No. 20-12-122)**

**REPAIR/REHABILITATION OF MAIN BUILDING.**

**ABC: Php 948,696.94**

<b>Item No.</b>	<b>Description</b>	<b>Unit</b>	<b>Quantity</b>	<b>Total Quotation/ Offer</b>
<b>1</b>	Repair/Rehabilitation of Main Building  <i>Please see attached Program of Works, Detailed Estimate and Site Development Plan</i>	Lot	1	

Respectfully returned to the Chairman of the BAC, DepED-CAR RO, with prices (inclusive of tax) herein quoted. All requirements/terms/conditions specified by that Office in this RFQ (Section I and Section II) are hereby accepted.

\_\_\_\_\_  
Name of Business and Signature of Supplier  
Contact No. \_\_\_\_\_

**II. TERMS AND CONDITIONS  
(RFQ No. 20-12-122)**

**A. Submission of Quotations**

The Requests for Quotation documents can be faxed or emailed to you upon request provided you provide your telefax number/email address. These may also be taken at the Administrative Division Office of the DepED-CAR Regional Office.

Quotations and any other requirement stated below, if submitted personally, should be received at the Administrative Division Office at DepED- CAR Regional Office, Wangal, La Trinidad, Benguet **Not later than 3 pm of December 15, 2020.** Quotations submitted by the supplier should be ***inclusive of tax.***

**B. Requirements**

The supplier should:

1. Submit duly accomplished/signed:
  - a) Request for Quotation (RFQ) Documents (Section I and Section II)
  - b) duly accomplished Program of Work; and,
  - c) Detailed Estimates
  - d) 2020 Mayor's Permit/Business Permit
  - e) PHILGEPS Registration Number
  - f) PCAB License

**On or before 3 pm of December 15, 2020;**

2. Submit (winning bidder)
  - a) Income/Business Tax Return; and,
  - b) Omnibus Sworn Statement

**Prior to issuance of Notice of award.**

  - c) Performance Security

**prior to signing of contract**

**C. Award/Contract**

1. DepED-CAR RO shall award the project to the supplier/contractor whose offer is determined to be the lowest complying and responsive quotation/offer.

**D. Deliveries/Completion and Inspection**

1. Completion of the project shall be **60 calendar days from receipt of the Notice to Proceed.**

**E.** DepED-CAR RO reserves the right to accept or reject any quotation, to annul or cancel the process, and to reject all quotations at any time prior to the award of the contract, without thereby incurring any liability to the affected Supplier/contractor/s. It has no responsibility whatsoever to compensate the supplier/contractor for any expense incurred in the preparation of the quotation nor does it have any obligation to inform the affected Supplier/contractor/s of the reasons of its decision.

I hereby concur/certify to comply with the above terms/conditions:

---

Business Name	Signature Over Printed Name of Contractor/Representative	Date
---------------	---	------

(Insert Company Logo/ Letter Head Here)

## PROGRAM OF WORKS

OFFICE: <b>DepED - CAR REGIONAL OFFICE</b>		DATE: November 2020				
REGION: CAR		BUDGET ALLOCATION:				
DIVISION:		ESTIMATED GOVERNMENT EXPENSES:				
PROJECT DESCRIPTION: <b>REPAIR / REHABILITATION OF MAIN BUILDING</b>		APPROVED BUDGET FOR THE PROJECT:				
PLAN NO.:		COMPLETION PERIOD: 60 CD				
LOCATION: DepED- CAR Regional Office COMPOUND, WANGAL, LA TRINIDAD, BENGUET		REQUIRED MANPOWER: PROJECT ENGINEER / FOREMAN, TILE SETTER, CARPENTERS AND LABORERS				
		REQUIRED EQUIPMENTS: CONCRETE CUTTER ASSORTED POWER AND HAND TOOLS				
ITEM NO.	WORK DESCRIPTION	% OF TOTAL	UNIT	QUANTITY	TOTAL COST	REMARKS
I.	General Requirements		lot	1.00		
	<b>REGIONAL DIRECTOR'S OFFICE</b>					
2.00	Concreting Works		cu.m	0.34		
3.00	Rebar Works		kg	37.44		
4.00	Formworks		lot	1.00		
5.00	Masonry Works		sq.m	7.32		
6.00	Doors and Windows		lot	1.00		
9.00	Carpentry Works		lot	1.00		
10.00	Electrical Works		lot	1.00		
11.00	Plumbing Works		lot	1.00		
12.00	Sanitary Works		lot	1.00		
13.00	Painting Works		sq.m	162.69		
14.00	Tile Works		sq.m	189.65		
	<b>ASSISTANT REGIONAL DIRECTOR'S OFFICE</b>					
2.00	Concreting Works		cu.m	0.15		
3.00	Rebar Works		kg	14.77		
4.00	Formworks		lot	1.00		
9.00	Carpentry Works		lot	1.00		
10.00	Electrical Works		lot	1.00		
11.00	Plumbing Works		lot	1.00		
12.00	Sanitary Works		lot	1.00		
13.00	Painting Works		sq.m	104.73		
14.00	Tile Works		sq.m	74.26		
	<b>OTHERS</b>					
	Painting Works		sq.m.	16.94		
	Chipping Works (Plumbing, Sanitary Works)		lot	1.00		
	Clearing and Demobilization		lot	1.00		
I.	<b>DIRECT COST</b>					
II.	<b>INDIRECT COST ( _ % of I)</b>					
III.	<b>WITH HOLDING TAX AND VAT ( 5% OF I + II )</b>					
<b>IV</b>	<b>TOTAL CONSTRUCTION COST</b>	<b>0.00%</b>			<b>Php</b>	<b>-</b>

PREPARED BY:

\_\_\_\_\_  
Contractor/ Representative

(Insert Company Logo/ Letter Head Here)

Project: REPAIR / REHABILITATION OF MAIN BUILDING

Location: DepEd CAR Compound, Wangal, La Trinidad, Benguet

## DETAILED ESTIMATE

I.D. NO	DESCRIPTION	UNIT	QTY	UNIT COST		TOTAL COST		GRAND TOTAL
				MATERIAL	LABOR	MATERIAL	LABOR	
<b>I.</b>	<b>General Requirements</b>							
	Mobilization/Temporary Structures, Utilities and Services/Demobilization	lot	1.00					
	Safety and Health	lot	1.00		-		-	
	Project Billboard	lot	1.00					
	<b>Sub-total</b>							
<b>REGIONAL DIRECTOR'S OFFICE</b>								
<b>2.00</b>	<b>Concreting Works</b>	<b>cu.m</b>	<b>0.34</b>					
2.010	Portland Cement	bag	4.00					
2.030	Washed Sand	cu.m	0.50					
2.040	Crushed Gravel 1"	cu.m	0.25					
	Restoration of Chipped Pavement/Ramp	lot	1.00					
	<b>Sub-total</b>							
<b>3.00</b>	<b>Rebar Works</b>	<b>kg</b>	<b>37.44</b>					
3.010	Deformed Round Bars, Grade 33	kg	37.44					
3.040	G.I. Tie Wire	kg	1.00					
	<b>Sub-total</b>							
<b>4.00</b>	<b>Formworks</b>	<b>lot</b>	<b>1.00</b>					
4.010	Rough Lumber	bd.ft	39.00					
4.050	Phenolic Board, 1/2"x4"x8'	pc	2.00					
4.040	CWN, Assorted	kg	2.00					
	<b>Sub-total</b>							
<b>5.00</b>	<b>Masonry Works</b>	<b>sq.m</b>	<b>7.32</b>					
	<b>Masonry Wall</b>							
5.040	CHB 4" thk	pc	92.00					
5.020	Portland Cement	bag	3.00					
5.030	Washed Sand	cu.m	0.40					
3.010	Deformed Round Bars, Grade 33	kg	19.33					
5.110	G.I. Tie Wire	kg	1.00					
	<b>Plaster Cement Finish</b>							
5.020	Portland Cement	bag	3.00					
5.030	Washed Sand	cu.m	0.20					
5.150	Skim Coat, 25kg/bag	bag	1.00					
	<b>Sub-total</b>							
<b>6.00</b>	<b>Doors and Windows</b>	<b>lot</b>	<b>1.00</b>					
6.020	Removal of Window with Jamb	sq.m	3.24	-		-		-
6.620	0.8 x 0.9 m Steel Awning Window with Grilles with 1/4 thk Clear Glass Panes complete with Accessories	set	1.00					
6.290	Door Jamb 45mm x 150mm	set	1.00					
6.160	Panel Door 0.70m x 2.10m	pc	3.00					

I.D. NO	DESCRIPTION	UNIT	QTY	UNIT COST		TOTAL COST		GRAND TOTAL
				MATERIAL	LABOR	MATERIAL	LABOR	
6.381	Hinges, Stainless 3-1/2" x 3-1/2", Heavy Duty , Five Knuckles	pa	9.00					
6.370	Bathroom, Lockset Keyless	set	3.00					
	<b>Sub-total</b>							
<b>9.00</b>	<b>Carpentry Works</b>	<b>lot</b>	<b>1.00</b>					
	<b>Ceiling</b>	<b>sq.m</b>	<b>11.25</b>					
9.710	250x3028mm Woodgrained PVC Ceiling Panel	pc	18.00					
9.730	H-Joint Moulding, PVC	pc	3.00					
9.771	14.5x63x3028mm Cornice PVC,	pc	10.00					
9.780	Construction Adhesive, 300cc	pc	3.00					
9.640	Nails (# 3)	kg	1.00					
	<b>Lavatory Counter Cabinets</b>							
	20mm x ±375mm x ±600mm Half Louvered Wooden Cupboards on 45mm x 100mm Wood Jamb Complete with Concealed Hinges, SS T-Bar Handle and Magnetic Catche	set	14.00					
	<b>Sub-total</b>							
<b>10.00</b>	<b>Electrical Works</b>	<b>lot</b>	<b>1.00</b>					
	<b>Roughing-ins</b>							
	Electrical Conduit PVC, 20mmØ	pc	11.00					
	Junction Box, 4" x 4" G.I.	pc	4.00					
	Utility Box, 2" x 4" G.I.	pc	4.00					
	<b>Wires &amp; Fixtures</b>							
	1 Gang Switch with Reflector	set	3.00					
	Duplex Universal Outlet w/ Ground	set	1.00					
	Duplex GFCI Outlet	set	3.00					
	3.5 sq. mm THW Wire	m	150.00					
10.721	Exhaust Fan	pc	1.00					
11.981	Water Heater, ±450x170x89mm (nominal), 3.3kW(min), 230VAC, 50Hz, Electronic, Built-in Pressure Booster, Stepless Temp Control w/ Sliding Alluminum Rail Gel Tray	set	1.00					
	<b>Sub-total</b>							
<b>11.00</b>	<b>Plumbing Works</b>	<b>lot</b>	<b>1.00</b>					
	<b>Roughing-ins</b> (including water line re-routing)							
11.050	PP-R Pipe 3/4"Ø	pc	15.00					
11.080	PP-R Coupling, 3/4"Ø	pc	25.00					
11.301	PP-R Plastic Union, 3/4"Ø	pc	6.00					
11.160	PP-R Tee, 3/4" x 1/2"Ø	pc	5.00					
11.190	PP-R Elbow 90o x 3/4"Ø	pc	5.00					
11.220	PP-R Coupling Reducer, 1/2" x 3/4"Ø	pc	1.00					
11.311	PP-R Gate Valve, 3/4"Ø	pc	1.00					
11.322	PP-R Adaptor Male Threaded, 3/4"Ø	pc	1.00					
11.060	PP-R Pipe 1/2"Ø	pc	15.00					
11.180	PP-R Elbow 90o x 1/2"Ø	pc	12.00					
11.181	PP-R Elbow 45o x 1/2"Ø	pc	6.00					
11.070	PP-R Coupling, 1/2"Ø	pc	20.00					
11.300	PP-R Plastic Union, 1/2"Ø	pc	6.00					
11.130	PP-R Tee, 1/2"Ø	pc	6.00					
11.310	PP-R Gate Valve, 1/2"Ø	pc	3.00					
11.320	PP-R Adaptor Female Threaded, 1/2"Ø	pc	6.00					
11.890	Angle Valve 3/8" x 1/2"Ø	pc	6.00					
12.020	Teflon Tape	roll	5.00					

I.D. NO	DESCRIPTION	UNIT	QTY	UNIT COST		TOTAL COST		GRAND TOTAL
				MATERIAL	LABOR	MATERIAL	LABOR	
	<b>Fixtures</b>							
11.971	Vessel Type Sink, ±14"Ø, Tempered Glass, Complete with Accessories	set	3.00					
12.010	S.S.Floor Drain 4' x 4"	pc	4.00					
12.031	Wall Mount SS Tissue Holder	pc	3.00					
12.040	Soap Holder	pc	3.00					
12.050	S.S. Grab Rail 1-1/2"Ø	pc	3.00					
12.070	SS Faucet, Goose Neck, Lavatory	set	4.00					
12.071	SS Wall Mounted Ring Towel Holder	set	3.00					
12.072	SS Wall Mounted Towel Rack , Double	set	3.00					
12.100	S.S. Sink with Strainer and P-Trap (Double)	set	1.00					
12.060	±500x800mm Frameless Mirror	pc	3.00					
	Comer Quadrant Shower Enclosure, 6mm thk Clear Glass on Alluminum Frame, ±930x930x1825mm	set	1.00					
	<b>Sub-total</b>							
<b>12.00</b>	<b>Sanitary Works</b>	<b>lot</b>	<b>1.00</b>					
	<b>Roughing-Ins</b>							
12.250	PVC Pipe 3"Ø	pc	6.00					
12.372	uPVC Coupling x 3"Ø	pc	4.00					
12.320	uPVC Elbow 90o x 3"Ø	pc	4.00					
12.350	uPVC Elbow 1/8 x 3"Ø	pc	4.00					
12.371	uPVC Cleanout x 3"Ø	pc	1.00					
12.390	uPVC Tee 3" x 3"	pc	3.00					
12.270	uPVC Sanitary Pipe 2"Ø	pc	5.00					
12.373	uPVC Coupling x 2"Ø	pc	4.00					
12.310	uPVC Elbow 90o x 2"Ø	pc	4.00					
12.380	uPVC Tee 2" x 2"	pc	4.00					
12.340	uPVC Elbow 1/8 x 2"Ø	pc	4.00					
12.510	uPVC P-Trap 2"	pc	3.00					
12.550	PVC Cement	can	5.00					
	<b>Fixtures</b>							
11.930	Water Closet Flange	set	3.00					
11.940	Water Closet 1.6gpf with Accessories	set	3.00					
11.950	Waterless Urinal	set	1.00					
	<b>Sub-total</b>							
<b>13.00</b>	<b>Painting Works</b>	<b>sq.m</b>	<b>162.69</b>					
	<b>Concrete Surfaces</b>	<b>sq.m</b>	<b>67.84</b>					
13.010	Surface Preparation	sq.m.	67.84	-		-		
13.040	Latex, Gloss	gal	4.00					
13.150	Masonry Putty	gal	2.00					
13.220	Acri Color	qrt	1.00					
13.460	Assorted Sand Paper	pc	10.00					
13.390	Assorted Paint Brush/Roller	pc	2.00					
	<b>Wood Surfaces (Interior Ceiling)</b>	<b>sq.m</b>	<b>94.85</b>					
13.070	Enamel, Quick Dry	gal	5.00					
13.310	Textured Paint	gal	2.00					
13.390	Assorted Paint Brush/Roller	pc	2.00					
13.380	Body Filler	gal	1.00					
13.700	1" Masking Tape	pc	2.00					
13.170	Paint Thinner	gal	2.00					
13.460	Assorted Sand Paper	pc	2.00					
	<b>Sub-total</b>							
<b>14.00</b>	<b>Tile Works</b>	<b>sq.m</b>	<b>189.65</b>					
1.071	Removal of Tiles	sq.m.	31.31	-		-		

I.D. NO	DESCRIPTION	UNIT	QTY	UNIT COST		TOTAL COST		GRAND TOTAL
				MATERIAL	LABOR	MATERIAL	LABOR	
	<b>Sink and Lavatory Counter</b>	<b>sq.m</b>	<b>8.29</b>					
14.020	Granite Slab, 19mm Thk	sq.m.	8.29					
14.210	Tile Adhesive 25 kg/bag	bag	4.00					
2.010	Portland Cement	bag	4.00					
	<b>Floor</b>	<b>sq.m</b>	<b>10.35</b>					
14.011	Granite Tiles 60cm x 120cm (Non-skid)	pc	16.00					
14.210	Tile Adhesive 25 kg/bag	bag	4.00					
14.200	Tile Grout 5 kg/bag	bag	1.00					
2.010	Portland Cement	bag	4.00					
5.030	Washed Sand	cu.m	0.60					
	<b>Walls</b>	<b>sq.m</b>	<b>53.13</b>					
14.012	Granite Tiles 60cm x 120cm (Polished)	pc	82.00					
14.210	Tile Adhesive 25 kg/bag	bag	13.00					
14.200	Tile Grout 5 kg/bag	bag	3.00					
2.010	Portland Cement	bag	13.00					
5.030	Washed Sand	cu.m	2.40					
	<b>Floor Parquet Tiles</b>	<b>sq.m</b>	<b>94.85</b>					
	Wood Parquet Sanding and Polishing	sq.m	94.85	-		-		
	<b>Sub-total</b>							
<b>ASSISTANT REGIONAL DIRECTOR'S OFFICE</b>								
<b>2.00</b>	<b>Concreting Works</b>	<b>cu.m</b>	<b>0.15</b>					
2.010	Portland Cement	bag	2.00					
2.030	Washed Sand	cu.m	0.25					
2.040	Crushed Gravel 1"	cu.m	0.25					
	<b>Sub-total</b>							
<b>3.00</b>	<b>Rebar Works</b>	<b>kg</b>	<b>14.77</b>					
3.010	Deformed Round Bars, Grade 33	kg	14.77					
3.040	G.I. Tie Wire	kg	1.00					
	<b>Sub-total</b>							
<b>4.00</b>	<b>Formworks</b>	<b>lot</b>	<b>1.00</b>					
4.010	Rough Lumber	bd.ft	17.00					
4.050	Phenolic Board, 1/2"x4'x8'	pc	2.00					
4.040	CWN, Assorted	kg	2.00					
	<b>Sub-total</b>							
<b>9.00</b>	<b>Carpentry Works</b>	<b>lot</b>	<b>1.00</b>					
	<b>Ceiling</b>	<b>sq.m</b>	<b>13.26</b>					
9.710	250x3028mm Woodgrained PVC Ceiling Panel	pc	22.00					
9.730	H-Joint Moulding, PVC	pc	3.00					
9.771	14.5x63x3028mm Cornice PVC,	pc	8.00					
9.780	Construction Adhesive, 300cc	pc	4.00					
9.640	Nails (# 3)	kg	1.00					
	<b>Lavatory Counter Cabinets</b>							
	20mm x ±375mm x ±600mm Half Louvered Wooden Cupboards on 45mm x 100mm Wood Jamb Complete with Concealed Hinges, SS T-Bar Handle and Magnetic Catche	set	6.00					
	<b>Sub-total</b>							
<b>10.00</b>	<b>Electrical Works</b>	<b>lot</b>	<b>1.00</b>					
	<b>Roughing-ins</b>							
	Electrical Conduit PVC, 20mmØ	pc	3.00					
	Junction Box, 4" x 4" G.I.	pc	2.00					
	Utility Box, 2" x 4" G.I.	pc	2.00					
	<b>Wires &amp; Fixtures</b>							
10.360	3-Gang Switch with Plate	pc	2.00					



I.D. NO	DESCRIPTION	UNIT	QTY	UNIT COST		TOTAL COST		GRAND TOTAL
				MATERIAL	LABOR	MATERIAL	LABOR	
	Duplex GFCI Outlet	set	2.00					
	3.5 sq. mm THW Wire	m	40.00					
	<b>Sub-total</b>							
<b>11.00</b>	<b>Plumbing Works</b>	<b>lot</b>	<b>1.00</b>					
	<b>Roughing-ins</b>							
11.060	PP-R Pipe 1/2"Ø	pc	7.00					
11.180	PP-R Elbow 90o x 1/2"Ø	pc	8.00					
11.181	PP-R Elbow 45o x 1/2"Ø	pc	4.00					
11.070	PP-R Coupling, 1/2"Ø	pc	8.00					
11.300	PP-R Plastic Union, 1/2"Ø	pc	2.00					
11.130	PP-R Tee, 1/2"Ø	pc	6.00					
11.320	PP-R Adaptor Female Threaded, 1/2"Ø	pc	3.00					
11.890	Angle Valve 3/8" x 1/2"Ø	pc	3.00					
12.020	Teflon Tape	roll	3.00					
	<b>Fixtures</b>							
11.971	Vessel Type Sink, ±14"Ø, Tempered Glass, Complete with Accessories	set	2.00					
12.010	S.S.Floor Drain 4' x 4"	pc	4.00					
12.031	Wall Mount SS Tissue Holder	pc	2.00					
12.040	Soap Holder	pc	2.00					
12.050	S.S. Grab Rail 1-1/2"Ø	pc	2.00					
12.070	SS Faucet, Goose Neck, Lavatory	set	3.00					
12.071	SS Wall Mounted Ring Towel Holder	set	2.00					
12.072	SS Wall Mounted Towel Rack , Double	set	2.00					
12.090	S.S. Sink with Strainer and P-Trap	set	1.00					
12.060	±500x800mm Frameless Mirror	pc	2.00					
	<b>Sub-total</b>							
<b>12.00</b>	<b>Sanitary Works</b>	<b>lot</b>	<b>1.00</b>					
	<b>Roughing-ins</b>							
12.270	uPVC Sanitary Pipe 2"Ø	pc	4.00					
12.373	uPVC Coupling x 2"Ø	pc	6.00					
12.310	uPVC Elbow 90o x 2"Ø	pc	6.00					
12.380	uPVC Tee 2" x 2"	pc	3.00					
12.340	uPVC Elbow 1/8 x 2"Ø	pc	6.00					
12.510	uPVC P-Trap 2"	pc	2.00					
12.550	PVC Cement	can	3.00					
	<b>Fixtures</b>							
11.930	Water Closet Flange	set	2.00					
11.940	Water Closet 1.6gpf with Accessories	set	2.00					
11.950	Waterless Urinal	set	1.00					
	<b>Sub-total</b>							
<b>13.00</b>	<b>Painting Works</b>	<b>sq.m</b>	<b>104.73</b>					
	<b>Wood Surfaces (Interior Ceiling)</b>		<b>89.88</b>					
13.070	Enamel, Quick Dry	gal	5.00					
13.310	Textured Paint	gal	13.00					
13.390	Assorted Paint Brush/Roller	pc	2.00					
13.380	Body Filler	gal	1.00					
13.700	1" Masking Tape	pc	20.00					
13.170	Paint Thinner	gal	2.00					
13.460	Assorted Sand Paper	pc	10.00					
	<b>Sub-total</b>							
<b>14.00</b>	<b>Tile Works</b>	<b>sq.m</b>	<b>74.26</b>					
1.071	Removal of Tiles	sq.m.	61.62	-		-		
	<b>Sink and Lavatory Counter</b>	<b>sq.m</b>	<b>2.20</b>					
14.020	Granite Slab, 19mm Thk	sq.m.	2.20					
14.210	Tile Adhesive 25 kg/bag	bag	2.00					

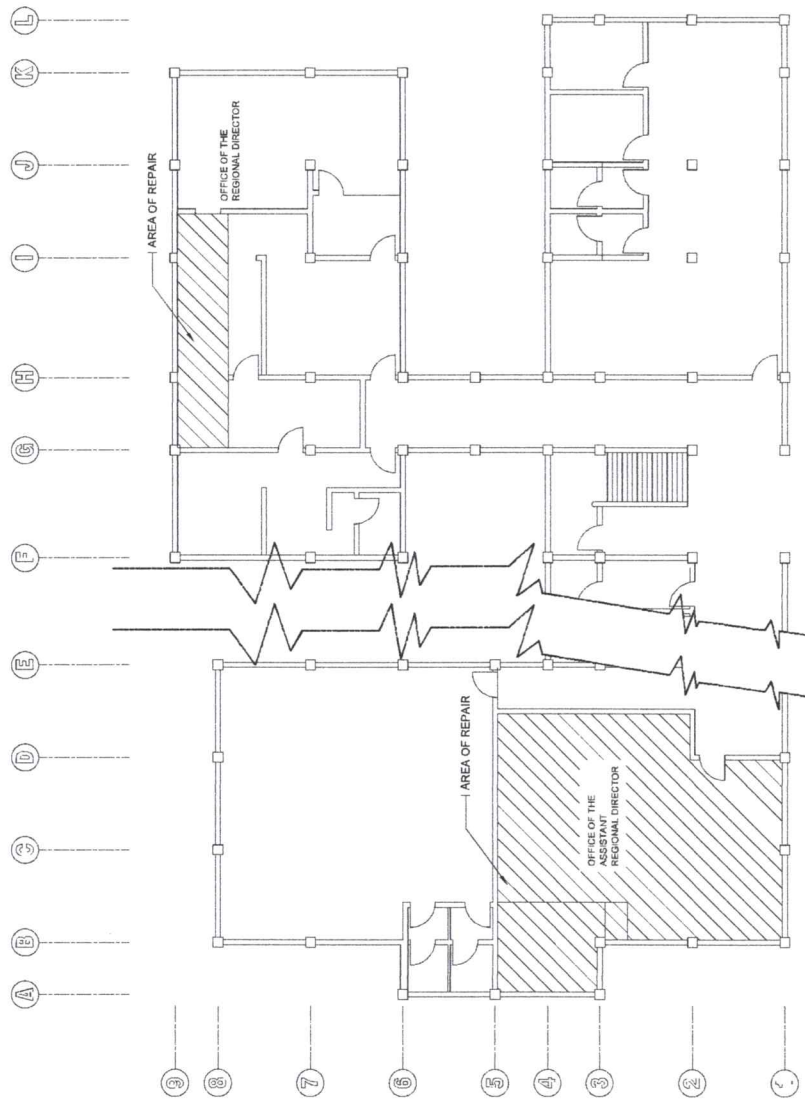
I.D. NO	DESCRIPTION	UNIT	QTY	UNIT COST		TOTAL COST		GRAND TOTAL
				MATERIAL	LABOR	MATERIAL	LABOR	
2.010	Portland Cement	bag	2.00					
	<b>Floor</b>	<b>sq.m</b>	<b>12.21</b>					
14.011	Granite Tiles 60cm x 120cm (Non-skid)	pc	19.00					
14.210	Tile Adhesive 25 kg/bag	bag	4.00					
14.200	Tile Grout 5 kg/bag	bag	1.00					
2.010	Portland Cement	bag	4.00					
5.030	Washed Sand	cu.m	0.70					
	<b>Walls</b>	<b>sq.m</b>	<b>59.85</b>					
14.012	Granite Tiles 60cm x 120cm (Polished)	pc	92.00					
14.210	Tile Adhesive 25 kg/bag	bag	15.00					
14.200	Tile Grout 5 kg/bag	bag	3.00					
2.010	Portland Cement	bag	15.00					
5.030	Washed Sand	cu.m	2.70					
	<b>Sub-total</b>							
<b>OTHERS</b>								
	<b>Painting Works</b>	<b>sq.m.</b>	<b>16.94</b>					
	<b>Concrete Surfaces (Parapet Coping Surface)</b>	<b>sq.m.</b>	<b>9.80</b>					
13.010	Surface Preparation	sq.m.	9.80	-		-		
13.501	Chlorinated Rubber Paint	gal	1.00					
13.390	Assorted Paint Brush/Roller	pc	1.00					
	<b>Matal Surfaces (Steel Hand Rails)</b>	<b>sq.m.</b>	<b>7.14</b>					
13.010	Surface Preparation	sq.m.	7.14	-		-		
13.070	Enamel, Quick Dry	gal	1.00					
13.390	Assorted Paint Brush/Roller	pc	1.00					
	<b>Sub-total</b>							
	<b>Chipping Works (Plumbing, Sanitary Works)</b>	<b>lot</b>	<b>1.00</b>	-		-		
	<b>Clearing and Demobilization</b>	<b>lot</b>	<b>1.00</b>	-		-		
<b>GENERAL REQUIREMENTS</b>								
<b>I.</b>	<b>DIRECT COST</b>							
<b>II.</b>	<b>INDIRECT COST</b>							
	OVERHEAD EXPENSES ( _% )							
	CONTINGENCIES ( _% )							
	MISCELLANEOUS ( _% )							
	CONTRACTORS PROFIT ( _% )							
<b>III.</b>	<b>TAX</b>							
<b>IV.</b>	<b>TOTAL CONSTRUCTION COST</b>							

PREPARED BY:

\_\_\_\_\_  
Contractor/ Representative



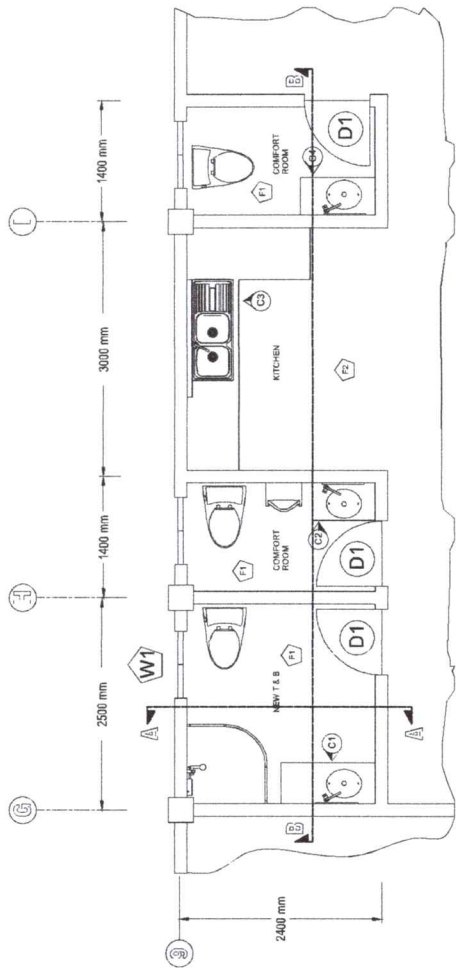
1 SITE DEVELOPMENT PLAN  
NOT TO SCALE  
DRAWN A 1



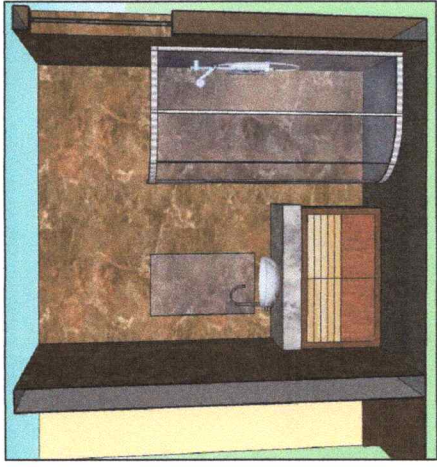
3 FIRST FLOOR PLAN  
NOT TO SCALE  
DRAWN A 1

2 SECOND FLOOR PLAN  
NOT TO SCALE  
DRAWN A 1

<p>REPUBLIC OF THE PHILIPPINES <b>DepED</b> DEPARTMENT OF EDUCATION EDUCATION FACILITIES SECTION WANGAL, LA TRINIDAD, BENGUET</p>	<p>PREPARED BY: <i>[Signature]</i> CULLEN S. WEGBYON DRAWING NO. 11</p>	<p>RECOMMENDING APPROVAL: CHRISTOPHER B. HADSAN DRAWING NO. 11</p>	<p>APPROVED BY: ESTELA L. CARINO EdD, CESO III REGIONAL DIRECTOR</p>	<p>PROJECT TITLE: REPAIR / REHABILITATION OF MAIN BUILDING LOCAL NOS. WANGAL, LA TRINIDAD, BENGUET</p>	<p>DRAWER: DEPED - CAR REGIONAL OFFICE SHEET CONTENT: AS SHOWN SHEET NO.: A 1 1</p>
---	---	--	--	--	---

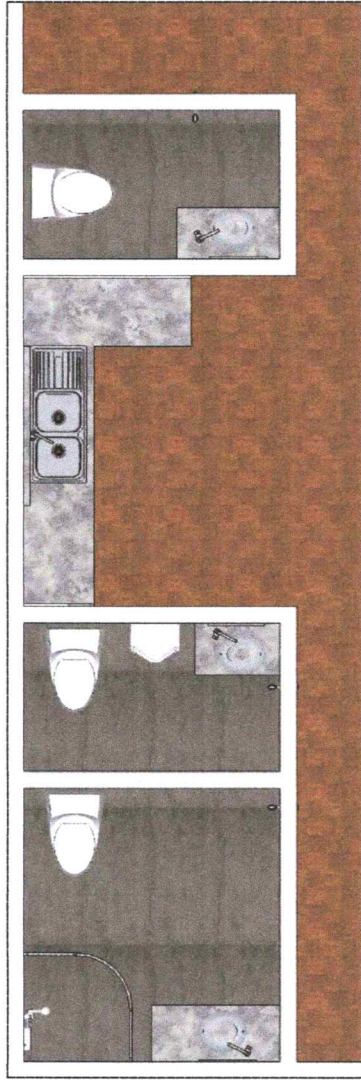


1 DIRECTORS OFFICE FLOOR PLAN  
NTS  
DRAWN



NOTE: TILE HEIGHT FLOOR TO CEILING  
3 SECTION THRU A-A  
NTS  
DRAWN

- F1 NEW 600x600 GRANITE TILES (NON-SKID)
- F2 WOOD PARQUET
- C1 COUNTERTOP 1: 1125mm LENGTH, 500mm WIDTH, 800mm HEIGHT
- C2 COUNTERTOP 2: 1125mm LENGTH, 500mm WIDTH, 800mm HEIGHT
- C3 COUNTERTOP 3: 600mm LENGTH, 500mm WIDTH, 800mm HEIGHT
- C4 COUNTERTOP 4: 600mm LENGTH, 500mm WIDTH, 800mm HEIGHT
- C5 COUNTERTOP 5: 600mm LENGTH, 500mm WIDTH, 800mm HEIGHT
- C6 COUNTERTOP 6: 600mm LENGTH, 500mm WIDTH, 800mm HEIGHT



2 TOP VIEW  
NTS  
DRAWN

## SCOPE OF WORK

### GENERAL:

THE WORK UNDER THIS PROJECT SHALL INCLUDE THE FURNISHING OF ALL MATERIALS, LABOR AND EQUIPMENT AND THE CONSTRUCTION COMPLETE OF ALL PHASES OF THE WORK SHOWN ON THE DRAWING SPECIFIED HEREIN.

### ITEM 2: CONCRETE WORKS

1. THE WORK CONSIST OF FURNISHING, FORMING, PLACING AND CURING PORTLAND CEMENT CONCRETE AS REQUIRED TO RESTORE CHIPPED PAVEMENTS AND TO BUILD THE LAVATORY COUNTERS AS SPECIFIED.

### ITEM 3: REBAR WORKS

1. THE WORK CONSIST OF FURNISHING AND PLACING STEEL REINFORCEMENT FOR THE CONCRETE LAVATORY COUNTERS.
2. STEEL REINFORCEMENT SHALL BE PLACED AND SECURED WITH SPACING NOT TO EXCEED 150mm ON CENTERS, BOTH WAYS.

### ITEM 4: FORMWORKS

1. FURNISH ALL MATERIALS AND EQUIPMENT AND PERFORM LABOR REQUIRED TO COMPLETE THE ASSEMBLY OF FORMS FOR THE LAVATORY COUNTER.

### ITEM 5: MASONRY WORKS

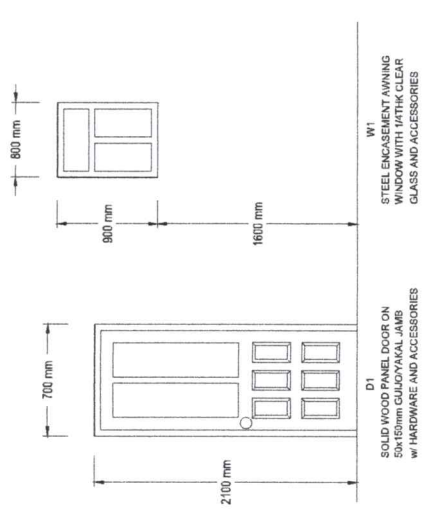
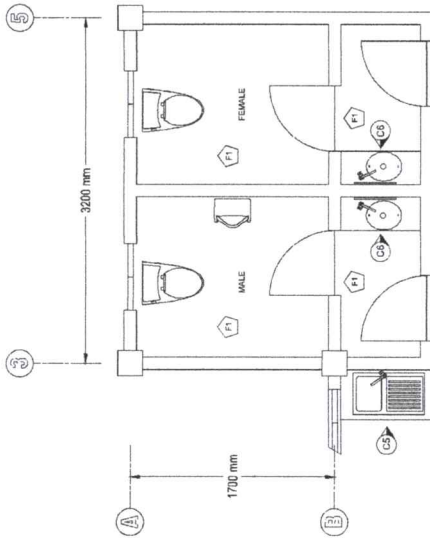
1. FURNISH ALL MATERIALS AND EQUIPMENT AND PERFORM LABOR REQUIRED TO COMPLETE THE SAID ITEM OF WORK.
2. WHERE NEW COMFORT ROOM IS TO BE CONSTRUCTED, ROUGHENING/ CHIPPING OF A WALL IS REQUIRED TO ENSURE PROPER BONDING OF THE EXISTING WALL TO THE NEW MASONRY WALL.
3. REINFORCING STEEL FOR THE NEW MASONRY WALL SHALL BE PROVIDED AND SHALL NOT EXCEED 450mm SPACING O.C.B.W.
4. ALL CHB EXPOSED SURFACES SHALL BE PLASTERED WITH CLASS B CEMENT-SAND MIXTURE OF 25mm MIN. THICKNESS.

### ITEM 6: DOORS AND WINDOWS

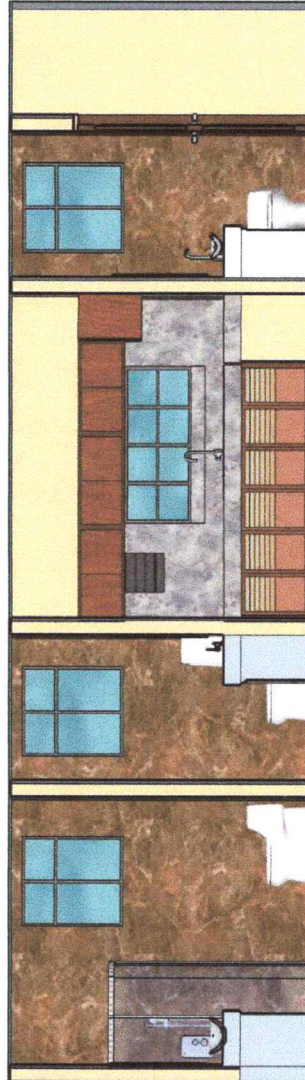
1. FURNISH ALL MATERIALS AND EQUIPMENT AND PERFORM LABOR REQUIRED TO COMPLETE THE SAID ITEM OF WORK.

### ITEM 9: CARPENTRY WORKS

1. FURNISH ALL MATERIALS AND EQUIPMENT AND PERFORM LABOR REQUIRED TO COMPLETE THE SAID ITEM OF WORK.
2. THE WORK SHALL CONSIST OF REMOVING EXISTING CEILING SHEETS AND REPLACING IT WITH PVC PANELS AND CORNICES.
3. EXISTING CLIPBOARDS ARE BE REMOVED AND REPLACED WITH NEW HALF LOUVERED WOODEN CLIPBOARDS. LIKE WISE INSTALLATION OF NEW ONES IS REQUIRED AS SPECIFIED HEREIN.

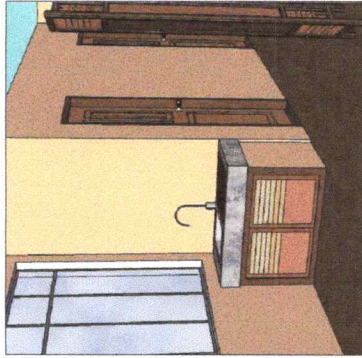


NO.	DESCRIPTION	WIDTH (mm)	HEIGHT (mm)
1	WOOD PARQUET		
2	WOOD PANEL		
3	COUNTER 1	1220	800
4	COUNTER 2	450	800
5	COUNTER 3	600	800
6	COUNTER 4	800	800
7	COUNTER 5	900	800
8	COUNTER 6	500	800

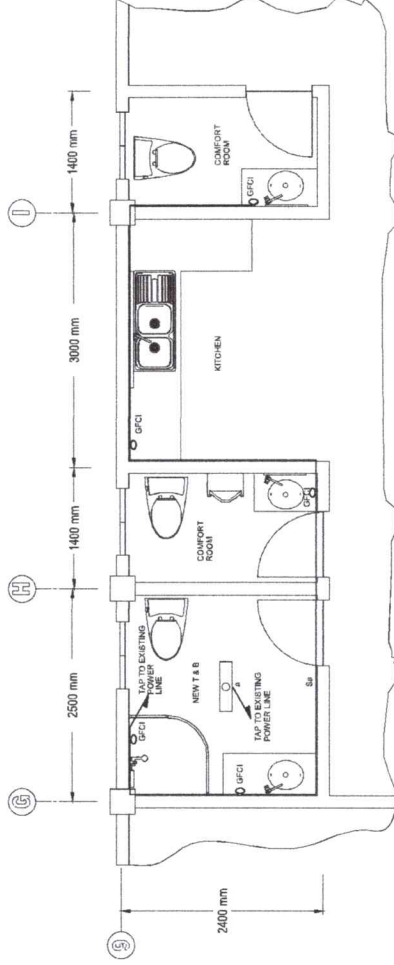


NOTE:  
TILE HEIGHT: FLOOR TO CEILING

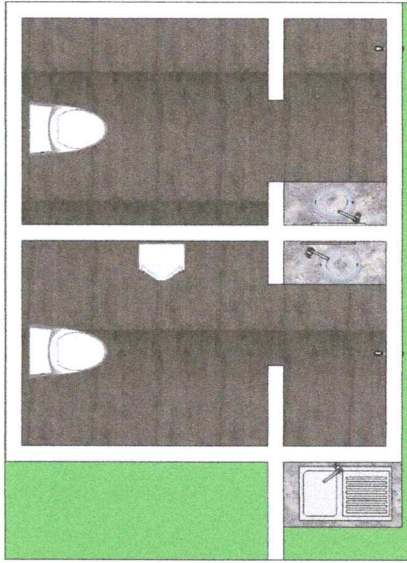
<p>REPUBLIC OF THE PHILIPPINES <b>DepEd</b> DEPARTMENT OF EDUCATION EDUCATION FACILITIES SECTION MUNICIPALITY OF TANDAG, SOUTHERN CEBU</p>	<p>DESIGNED BY: <i>[Signature]</i> CULLEN S. WEGINGTON DATE: 08/11/23</p>	<p>APPROVED BY: CHRISTOPHER B. HADSAN DATE: 08/11/23</p>	<p>APPROVED BY: ESTELA L. CARINO EAD, CESO IV REGIONAL DIRECTOR</p>	<p>PROJECT TITLE: REPAIR / REHABILITATION OF MAIN BUILDING LOC./UPN: WANGAL, LA TRINIDAD, BENGUET</p>	<p>OWNER: DEPED - CAR REGIONAL OFFICE</p>	<p>DRAWN: A 3</p>	<p>DATE: A 3</p>	<p>PROJECT NO.: A 3</p>
	<p>AS SHOWN</p>			<p>AS SHOWN</p>				



1 PERSPECTIVE  
DRAWN  
A 4  
NTS



1 DIRECTORS OFFICE ELECTRICAL LAY OUT  
DRAWN  
E 4  
NTS



2 REPAIR AREA TOP VIEW  
DRAWN  
A 4  
NTS

SCOPE OF WORK

ITEM 10: ELECTRICAL WORKS  
FURNISH ALL MATERIALS AND EQUIPMENT AND PERFORM LABOR REQUIRED TO COMPLETE THE SAID ITEM OF WORK.

1. REPLACE EXISTING SWITCHES AND CONVENIENT OUTLETS TO NEW ONES.
2. ALL NEW LIGHTINGS AND C.O. ARE TO BE TAPPED TO EXISTING POWER LINES.

ITEM 11: PLUMBING WORKS

THE WORK SHALL CONSIST OF FURNISHING, INSTALLATION OF LAVATORY SINK, WATER LINES AND OTHER ACCESSORIES AS SHOWN ON THE APPROVED PLAN, UNLESS OTHERWISE SPECIFIED BY THE ENGINEER.

1. ALL PIPES SHALL BE NEW AND OF APPROVED QUALITY.
2. WHERE NEW LINE IS TO BE INSTALLED, CHIPPING OF EXISTING PAVEMENT IS TO BE DONE. APPROPRIATE EQUIPMENT SHALL BE USED TO AVOID PERIPHERAL DAMAGE.
3. NEW WATER LINE FROM SOURCE TO DISTRIBUTION SHALL BE EMBEDDED UNDER THE PAVEMENT USING 3/4" DIAMETER PPR PIPE.
4. ALL EXISTING WATER LINE IN THE REPAIR AREA SHALL BE REPLACED WITH NEW PPR PIPES AND OF APPROVED QUALITY.

ITEM 12: SANITARY WORKS

1. THE WORK SHALL CONSIST OF FURNISHING, INSTALLATION OF WATER CLOSET, SEWER AND DRAINAGE LINE.
2. WHERE NEW SEWER LINE IS TO BE INSTALLED AND SHALL BE TAPPED TO EXISTING LINE. SLOPE/INCLINATION SHALL BE PROPERLY OBSERVED.
3. FLOOR AND LAVATORY DRAINS SHALL BE DISCHARGED TO THE NEAREST CATCH BASIN.
4. ALL PVC PIPES SHALL BE NEW AND OF APPROVED QUALITY.

ITEM 13: PAINTING WORKS

1. THE WORK SHALL CONSIST OF SCRAPING OF FLAKING PAINTS, CLEANING AND PREPARING SURFACES AND APPLYING PROTECTIVE PAINT COATING.
2. TEXTURED PAINT SHALL BE APPLIED FOLLOWING THE EXISTING PATTERN TO RESTORE CEILING APPEARANCE.

ITEM 14: TILE WORKS

1. FURNISH ALL MATERIALS AND PERFORM LABOR REQUIRED TO COMPLETE ALL TYPES OF TILE WORKS.
2. EXISTING WALL AND FLOOR TILES SHALL BE REMOVED AND TO BE REPLACED WITH NEW ONE AS SPECIFIED. APPROPRIATE EQUIPMENT SHALL BE USED TO AVOID PERIPHERAL DAMAGE. ESTABLISH LINES OF BORDERS AND CENTER FIELD WORK IN BOTH DIRECTIONS TO PERMIT THE PATTERN TO BE LAID WITH A MINIMUM CUT TILES. CLEAN CHIPPED SUB-FLOOR THEN MOISTEN BUT NOT SOAKED AND SPREAD CEMENT GROUT TILES ON CEMENT GROUT BED.