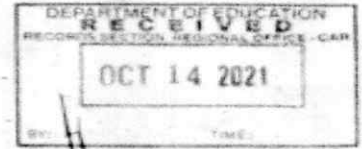




Republika ng Pilipinas
Kagawaran ng Edukasyon
 Tanggapan ng Pangalawang Kalihim



OUA MEMO 00-1021-0100
MEMORANDUM
 13 October 2021

TO : REGIONAL DIRECTORS
SCHOOLS DIVISION SUPERINTENDENTS
 (Regions and Divisions with Schools Included for the Pilot of Face-to-Face Classes)

ATTENTION : REGIONAL AND DIVISION ENGINEERS

SUBJECT : CONDUCT OF DETAILED ASSESSMENT OF THE READINESS OF SCHOOL FACILITIES FOR PILOT FACE-TO-FACE CLASSES

The Department of Education has already released the initial list of schools that will conduct the pilot implementation of the face-to-face classes on 15 November 2021. The schools were identified and selected through the assistance of the Department of Health (DOH).

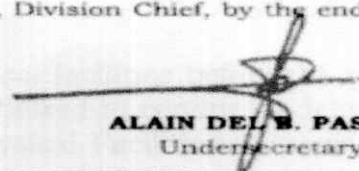
To determine the readiness of the school facilities before the opening of classes, Regional and Division Engineers must be mobilized to conduct a detailed assessment of the identified schools using the attached Physical Facilities Assessment Form for Pilot Face-to-Face Classes (Annex A).

The validation report should include the specific actions to be taken by the Division Offices to make the necessary improvements of facilities to meet the standards required by the Inter-Agency Task Force for the Management of Emerging Infectious Diseases (IATF).

Kindly refer to Annex B for data on school facilities for the identified fifty-nine (59) schools based on the latest National School Building Inventory System (NSBI) for your reference.

The attached form must be accomplished and submitted to the Education Facilities Division through Engr. Annabelle R. Pangan, Division Chief, by the end of the month or on 30 October 2021.

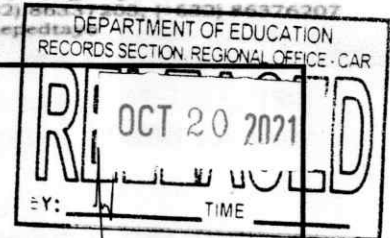
For your compliance.


ALAIN DEL B. PASCUA
 Undersecretary



Office of the Undersecretary for Administration (OUA)

(Administrative Service (AS), Information and Communications Technology Service (ICTS), Disaster Risk Reduction and Management Service (DRRMS), Bureau of Learner Support Services (BLSS), Baguio Teachers Camp (BTC), Central Security & Safety Office (CSSO))
 Department of Education, Central Office, Meralco Avenue, Pasig City
 Rm 519, Mabini Bldg; Mobile: +639260320762; Tel: (+632) 86376207
 Email: usec.adming@deped.gov.ph; Facebook/Twitter (@depedadms)



Republic of the Philippines
CORDICERA ADMINISTRATIVE REGION
 Wangal, La Trinidad, Benguet

October 19, 2021

To : Schools Division Superintendents
 Division Engineers/DepEd Project Engineers/Architects

For information and appropriate action.

ESTELA LEON-CARIÑO Edd, CESO III
 REGIONAL DIRECTOR

For the Regional Director


FLORANTE E. VERGARA
 OIC- ASSISTANT REGIONAL DIRECTOR

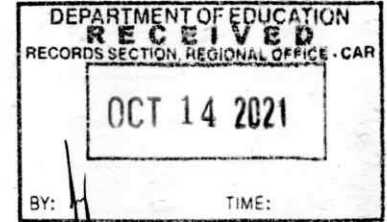


QUAD00-1021-0 100
To authenticate this document,
please scan the QR Code.



Republika ng Pilipinas
Kagawaran ng Edukasyon
Tanggapan ng Pangalawang Kalihim

OUA MEMO 00-1021-0100
MEMORANDUM
13 October 2021



TO : **REGIONAL DIRECTORS**
SCHOOLS DIVISION SUPERINTENDENTS
(Regions and Divisions with Schools Included for the Pilot of Face-to-Face Classes)

ATTENTION : **REGIONAL AND DIVISION ENGINEERS**

SUBJECT : **CONDUCT OF DETAILED ASSESSMENT OF THE READINESS OF SCHOOL FACILITIES FOR PILOT FACE-TO-FACE CLASSES**

The Department of Education has already released the initial list of schools that will conduct the pilot implementation of the face-to-face classes on 15 November 2021. The schools were identified and selected through the assistance of the Department of Health (DOH).

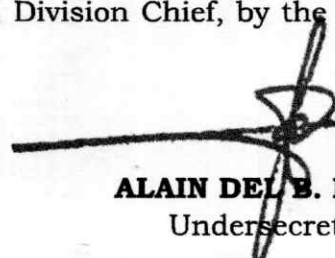
To determine the readiness of the school facilities before the opening of classes, Regional and Division Engineers must be mobilized to conduct a detailed assessment of the identified schools using the attached Physical Facilities Assessment Form for Pilot Face-to-Face Classes (Annex A).

The validation report should include the specific actions to be taken by the Division Offices to make the necessary improvements of facilities to meet the standards required by the Inter-Agency Task Force for the Management of Emerging Infectious Diseases (IATF).

Kindly refer to Annex B for data on school facilities for the identified fifty-nine (59) schools based on the latest National School Building Inventory System (NSBI) for your reference.

The attached form must be accomplished and submitted to the Education Facilities Division through Engr. Annabelle R. Pangan, Division Chief, by the end of the month or on 30 October 2021.

For your compliance.


ALAIN DEL B. PASCUA
Undersecretary



Office of the Undersecretary for Administration (OUA)

[Administrative Service (AS), Information and Communications Technology Service (ICTS), Disaster Risk Reduction and Management Service (DRMMS), Bureau of Learner Support Services (BLSS), Baguio Teachers Camp (BTC), Central Security & Safety Office (CSSO)]

Department of Education, Central Office, Meralco Avenue, Pasig City
Rm 519, Mabini Bldg; Mobile: +639260320762; Tel: (+632) 86337203, (+632) 86376207
Email: usec.admin@deped.gov.ph; Facebook/Twitter @depeditayo



Scan this QR Code to view
Videos and Magazines
of Major Programs



Physical Facilities Assessment Form for Pilot Face to Face Classes (Annex A)

Name of School: _____
 School ID: _____
 Address: _____
 Region: _____
 Division: _____
 Date accomplished: _____

SURVEY QUESTIONS	YES	NO	FOR REPAIR	NO. OF UNITS FOR REPAIR	FOR REPLACEMENT	NO. OF UNITS FOR REPLACEMENT	OBSERVATIONS/REMARKS
I. CLASSROOM STRUCTURES							
a. With available seats for every classroom							
i. Available seats are in good condition							
ii. Seats are arranged at least 1-2 meters apart							
b. With working electrical lights in every classroom							
c. With available electric fans in every classroom							
d. With electrical outlets in every classroom							
e. Classrooms are provided with doors and windows							
i. Two (2) sets of doors for each classroom							
ii. Dedicated entrance and exit are properly marked for every classroom							
iii. Windows open and close easily							
f. With markers on the floor for the traffic flow and physical distancing inside the classroom							
g. With directional markers along the hallway indicating the walking direction							
II. SCHOOL COMPOUND							
a. Display of school map at the entrance point indicating the location of the classrooms and traffic flow							
b. With directional markers indicating the traffic flow within the compound							
c. Separate entrance and exit points in the school							
III. WATER AND SANITATION FACILITIES							
a. With available handwashing station:							
i. With available clean and potable water supply							
ii. With working faucets							
b. Handwashing facilities in strategic location							
i. Near the school entrance							
ii. Outside of the buildings							
c. With available toilet facilities:							
i. With working faucets and lavatories							
ii. With available clean and safe water supply							
iii. With toilet bowls in good condition							
OTHER FACILITIES							
1 School Clinic							

SUMMARY OF PHYSICAL FACILITIES REQUIREMENTS

Classrooms	Total No. of Required Classrooms @ 1:15 set-up	Total No. of Usable Classrooms @ 1:15 set-up	Total Remaining No. of Classrooms Required @ 1:15 set-up
Classrooms at 1:15 max of 1:16 per classroom (See attached Classroom Layout)			
Sanitary Facilities	Total No. of Required based on 1:50 learner ratio	Total No. of Usable Facility based on 1 seat:50 learner ratio	Total Remaining Requirements based on 1 seat:50 learner ratio
Toilet Facilities			
Handwashing Facilities			

Inspected by:

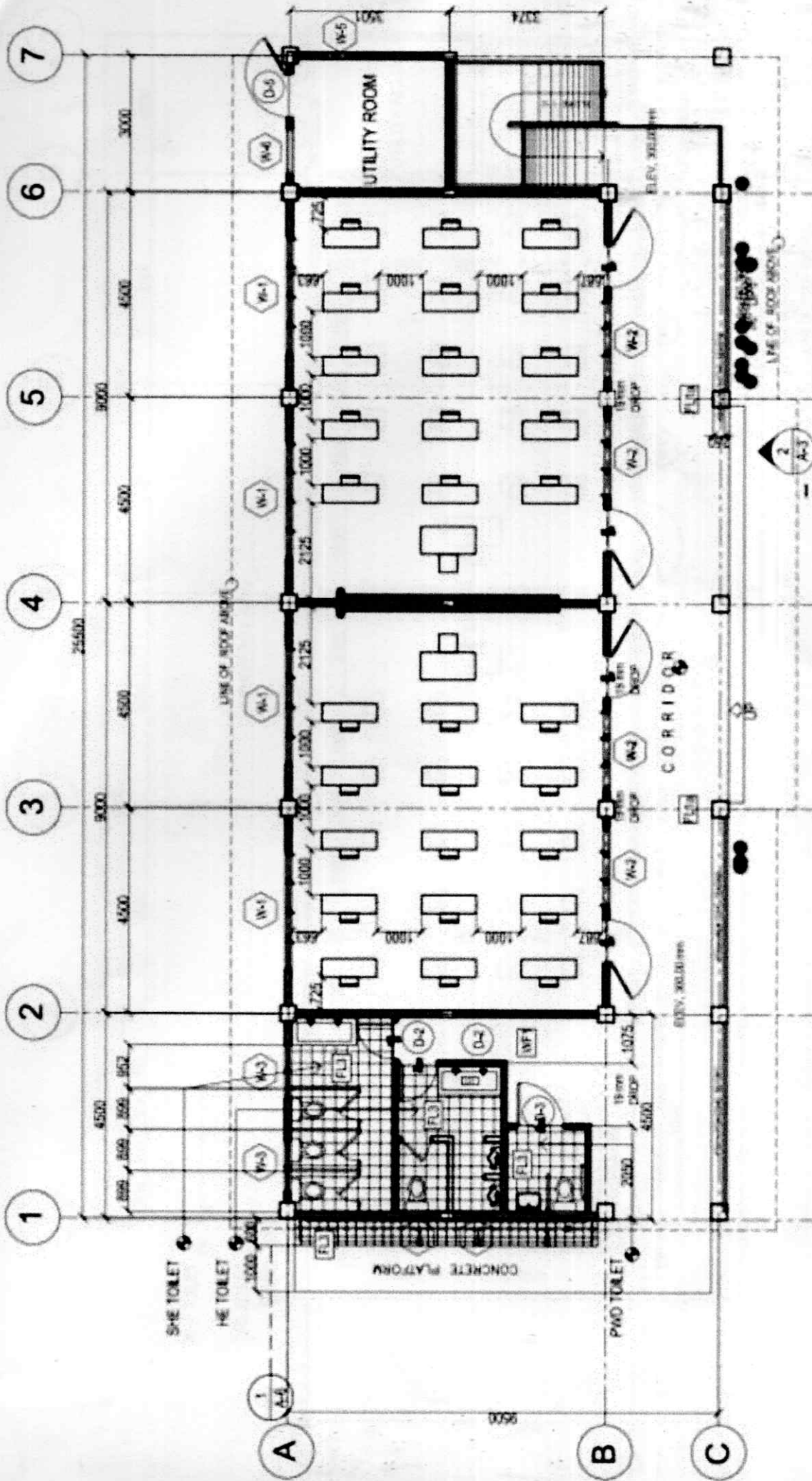
Reviewed:

Noted:

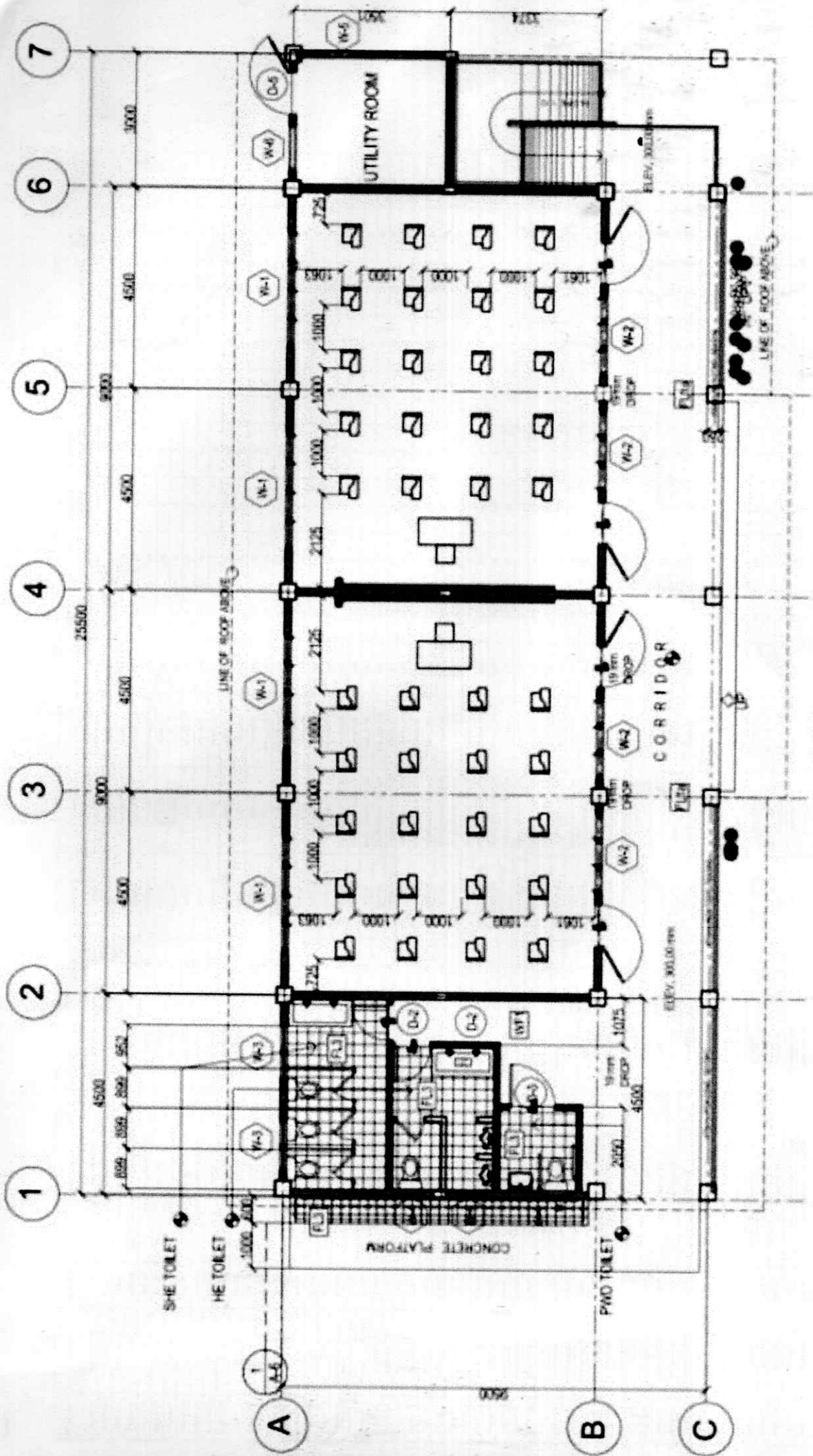
DepEd Division Engineer

SGOD Chief

Schools Division Superintendent



2 FLOOR PLAN
 A-2 1:100 SCALE



2 FLOOR PLAN
A-2 SCALE 1:100M

